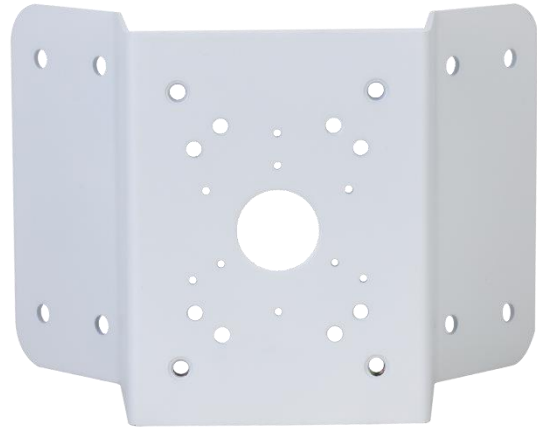


## *Corner Mount Bracket*

# LXCM01



### Key Features

- SECC corner mount bracket
- White color
- Sustains a maximum load capacity of 22.05lb
- Easy installation

# Specification

LXCM01

## Accessory

Weight	1.7kg(3.75lb)
Load Bearing	10.0kg(22.05lb)
Material	SECC
Appearance	White
Dimension(WxHxD)	243.0mm x 170.0mm x 138.0mm (9.57" x 6.69" x 5.43")
Pipe Thread	N/A

## Dimensions (mm[inch])

